

Make your presentations come alive with these easy-to-use accessories



ELPDC06



ELPDC11



ELPIU01

IMAGING INNOVATION

These simple-to-use accessories make your presentations come alive when you demonstrate with real specimens or interact and update content together with the audience.

- **Portable document camera ELPDC06**
This high performance visualiser is easy to set up via USB connection, and displays documents or 3D objects at a sharp XGA (1024 x 768) resolution
- **Desktop document camera ELPDC11**
A versatile addition to any projector, its rotating camera head with intuitive digital zoom (10x) and microscope adaptor lets you show small specimens, A3 documents, still images and 3D objects, in clear detail
- **Interactive Unit ELPIU01**
Its interactive pen and easy-to-use interactive tools combine to turn any presentation into a lively and engaging session in corporate or classroom settings

PROJECTOR PERIPHERALS

Interactive Unit ELPIU01

IMAGING INNOVATION

Compatible with all projectors.



Its interactive pen and easy-to-use interactive tools combine to turn any presentation into a lively and engaging session in corporate or classroom settings.

AFFORDABLE INTERACTIVITY WITH ANY PROJECTOR

Enjoy instant interactivity by connecting to any existing ceiling-mounted projector. The easy-to-use interactive tools enhance presentations and engagement in corporate and classroom settings. Flexible screen sizes of - XGA (4:3) 63 to 102", WXGA (16:10) 60 to 96", Widescreen 58 to 93".

The interactive pen allows users to write with virtual ink on the projected area, or use it as a computer mouse.



Interactive pen



Pen tray

DIRECT USB CONNECTION

Powers up easily from a PC via USB connection; there are no extra cables required.

Lightweight unit is only 2.3 kg (5.07 lbs) and 1.05m (3.44 ft) long, and can easily be mounted above any standard whiteboard or smooth wall.



EASY INSTALLATION AND SET UP

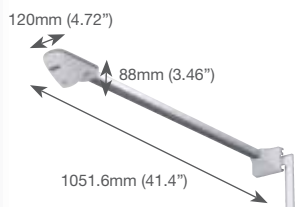


This lightweight interactive unit allows for easy installation and immediate use.

Instant interactivity when you connect to any existing ceiling-mounted projector.

ELPIU01

SPECIFICATIONS



SUPPLIED ACCESSORIES

Easy Interactive Pen	2 pens
Battery	Alkaline AAA x 4 (for Easy Interactive Pen)
USB Cable	5m, USB A / USB B
Bundled Software (CD-ROM)	Easy Interactive Driver
Setting Plate	Wall Plate Short Wall Plate
Pen Tray	

OPTIONAL ACCESSORIES

Easy Interactive Pen	ELPPN02 NEW
----------------------	-------------

EPSON is the registered trademark of Seiko Epson Corporation.

All other product names and other company names used herein are for identification purposes only and are the trademarks or registered trademarks of their respective owners.

EPSON disclaims any and all rights in those marks. Scan/Print samples shown herein are simulations. Specifications are subject to change without notice.

MODEL NUMBER	ELPIU01
SCREEN SIZE (PROJECTED DISTANCE)	XGA (4:3) 63" to 102" WXGA (16:10) 60" to 96"
EASY INTERACTIVE FUNCTION	Available
INPUT/OUTPUT I/F	USB Slave-A Type
ELECTRICAL POWER SUPPLY METHOD POWER SUPPLY VOLTAGE POWER CONSUMPTION	USB Bus power 5V 180mA
OPERATING TEMPERATURE	5 °C to 35 °C <41°F to 95 °F> (20% - 80% humidity, unfrozen)
OPERATING ALTITUDE	0m to 2286m <0 ft to 7500 ft>
STORAGE TEMPERATURE	-10 °C to 60 °C <14 °F to 140 °F> (10% - 90% humidity, unfrozen)
DIMENSION RECEIVER UNIT SIZE WALL-PLATE SUB WALL-PLATE	120 x 88 x 1051.6 mm (4.72" x 3.46" x 41.4") 482.6 x 71.5 x 14.6 mm (19" x 2.81" x 0.57") 120.8 x 71.5 x 14.6 mm (4.76" x 2.81" x 0.57")
WEIGHT	without Wall Plate : 3.2lbs. / 1.45kg with Wall Plate : 5.08lbs. / 2.3kg with Short Wall Plate : 3.97lbs. / 1.8kg
OPERATING TEMPERATURE	+5°C to +35°C <41°F to 95°F> (non condensing)
STORAGE TEMPERATURE	-10°C to +60°C <14°F to 140°F> (non condensing)
OPERATING ALTITUDE	0m to 2286m <0 ft to 7500 ft> (over 1500m / 4,921 ft : with High altitude mode)
SUPPORTED LANGUAGES USERS GUIDE SET-UP GUIDE	28 Languages (English / French / German / Italian / Spanish / Catalan / Portuguese / simplified Chinese / traditional Chinese / Dutch / Danish / Polish / Hungarian / Czech / Romanian / Slovenian / Norwegian / Swedish / Finnish / Russian / Ukrainian / Greek / Turkish / Arabic / Croatian / Slovak / Bulgarian / Hebrew) 8 Languages (English / French / German / Italian / Spanish / Portuguese / simplified Chinese / traditional Chinese)

PROJECTOR PERIPHERALS

Document Camera ELPDC06



IMAGING INNOVATION

Compatible with all projectors via PC.
Direct USB connection to selected Epson projectors;
for details refer to website www.epson.com

This high performance visualiser is easy to set up via USB connection, and displays documents or 3D objects at a sharp XGA (1024 x 768) resolution.

LIGHTWEIGHT, COMPACT AND FOLDABLE



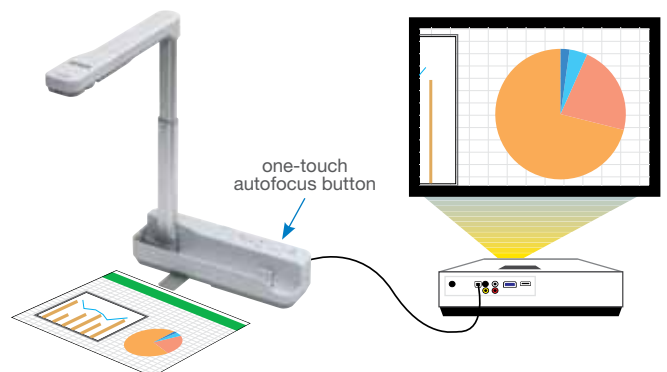
Made easy for users to bring along to presentations, it packs conveniently with any main unit without an extra storage bag or compartment.

At 0.96 kg (2.11 lbs), its compact design makes it easy to be carried around and used whenever required.

DIRECT USB CONNECTION, 4X ZOOM, ONE-TOUCH AUTOFOCUS

Quick and simple to set up with no extra power cable required as power comes from main projector or PC.

Digitally captures images and text from books or documents and projects them onto the screen.



Zooms easily into specific contents on a book or document

TWO-WAY CONNECTION

Plug and play easily with compatible projectors. For other projectors, simply connect the document camera via PC by installing the supplied software application.

Its 1.92 megapixel camera can capture up to 15 frames per second.



PROJECTOR PERIPHERALS

Desktop Document Camera ELPDC11

IMAGING INNOVATION

Compatible with all projectors.

A versatile addition to any projector, its rotating camera head with intuitive digital zoom (10x) and microscope adaptor lets you show small specimens, A3 documents, still images and 3D objects, in clear detail.



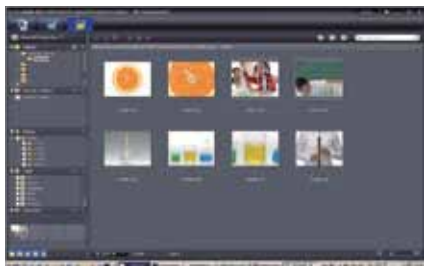
ROTATING CAMERA HEAD, 10X DIGITAL ZOOM AND MANUAL ZOOM



Provides great versatility in capturing images up to 5 megapixels from different directions.

Versatile rotating camera head with intuitive 10x digital zoom [including 2 times lossless zoom for XGA/WXGA output, 1.9 times lossless zoom for SXGA output] and manual zoom.

APPLICATION SOFTWARE, FILE MANAGEMENT

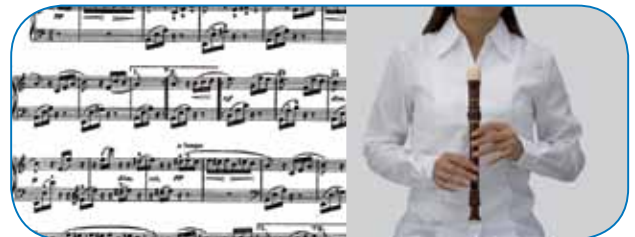


Manages saved images and videos into groups according to time, subject and importance.

Other applications - With the built-in microphone and easy-to-record function, users can record both video and audio. Draw or make notes using 'live' annotation. The combining of images into one video file can easily be done using its time lapse function.

ADVANCED FEATURES WITH SPLIT SCREEN FUNCTION

Its split screen capability enables projection of a live video and still image from SD card or its 1GB internal memory. The versatile remote controller works for both camera and projector. Bundled with a microscope tube, it is compatible with 20-34 mm eyepieces from a variety of microscopes.



Using its split screen, viewers can enjoy both still and moving images

Project images directly from SD Card



Enlarges objects for better viewing and understanding by the audience

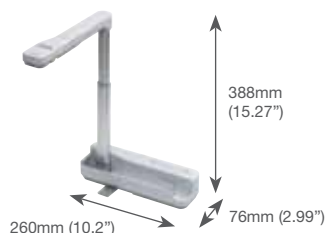
View specimens or documents up to A3 size in clear detail



ELPDC06, ELPDC11

SPECIFICATIONS

ELPDC06



SUPPLIED ACCESSORIES

USB Cable 3m (USB-A/USB-B)
Soft Carrying Case
User's Manual Set
Quick Set-up Guide
Instruction Sticker

APPLICATION SOFTWARE

ArcSoft Application Software
Language 6 Languages
Edit
Preview
Saving Format
Still Image JPG/BMP

ELPDC11



SUPPLIED ACCESSORIES

USB Cable USB-A/USB-B
User's Manual Set CD-ROM
External AC Power Adapter with Power Code
Application Software
Remote Control
2pcs AA Batteries
Quick Set-up Guide
VGA Cable

APPLICATION SOFTWARE

ArcSoft Application Software
Button Manager
Language 13 Languages
Annotation (Live/Still image)
Edit
Preview
Video Capture
Still image capture
Time Lapse
Web Upload
Intelligent File Management
Saving Format
Still Image JPG/BMP
Video(For Windows) WMV/MPG/AVI
Video(For MAC) MOV

EPSON is the registered trademark of Seiko Epson Corporation.

All other product names and other company names used herein are for identification purposes only and are the trademarks or registered trademarks of their respective owners.

EPSON disclaims any and all rights in those marks. Scan/Print samples shown herein are simulations. Specifications are subject to change without notice.

MODEL NUMBER	ELPDC06	ELPDC11
VIDEO PICK-UP DEVICE EFFECTIVE PIXELS FRAME RATE W/PC OUTPUT ANALOG USB WHITE BALANCE EXPOSURE BRIGHTNESS IMAGE FREEZE	1/3" CMOS Sensor 1.92M pixels MAX 15fps NA XGA w/PJ, UXGA / SXGA / XGA / SVGA / VGA / QVGA w/PC Auto Auto Auto Available	1/4" CMOS Sensor 5M pixels MAX 30fps SXGA / XGA / WXGA QVGA / VGA / SVGA / XGA / SXGA / UXGA Auto Auto Auto NA
OPTICAL SYSTEM LENS SHOOTING AREA DIGITAL ZOOM FOCUS IRIS	F=2.8 f=4.1 10.7"×14.3" 4x Auto (Need to press "AF Button") Auto	F=2.8 11.7"×16.5" 10x Digital (including loss-less Zoom) Auto (Need to press "AF Button") NA
ILLUMINATION SYSTEM UPPER BRIGHTNESS	White LED×2 NA	White LED×2 250lx (Shooting area: A3)
GENERAL OPERATING TEMPERATURE OPERATING HUMIDITY DIMENSION (Not including protruding parts) OPEN FOLDED WEIGHT THEFT PROOF KENSINGTON LOCK SECURITY BAR SECURITY LOCK HOLE	5 °C to 35 °C <41 °F to 95 °F> 20%-80% W260 x D76 x H388 mm W260 x D76 x H60 mm 2.1lbs / 0.9kg Available NA NA	5 °C to 35 °C <41 °F to 95 °F> 20%-80% W270 x D326 x H437 mm W270 x D192 x H244 mm 4.85lbs / 2.2kg Available Available Available
FUNCTION ZOOM FREEZE / AUTO FOCUS / LED SOURCE CHANGE FOR PJ BRIGHTNESS / CONTRAST / NEGATIVE / B&W SPLIT SCREEN / SLIDESHOW VIDEO CAPTURE DIGITAL SCROLL PAN/TILT FLICKER REDUCTION / IMAGE ROTATION SOURCE(PC/DC) / AUTO DETECT ASPECT RATIO	+ (TELE => WIDE) - (WIDE => TELE) LOSS-LESS ZOM Available Available NA NA NA NA NA NA NA	10 times (including loss-less zoom) 10 times (including loss-less zoom) 2 times *Only XGA/WXGA output **1.9 times at SXGA output Available NA Available Available Available Available Available
POWER POWER SUPPLY METHOD POWER SUPPLY VOLTAGE POWER FREQUENCY OUTPUT VOLTAGE OF AC POWER ADAPTER POWER CONSUMPTION POWER CONSUMPTION (STAND-BY MODE)	USB Bus power 5V NA NA Less than 2.5W NA	NA 100V - 240V AC/DC 50/60Hz DC 12V 14.5W 0.46W
IMAGE ROTATION HORIZONTAL / VERTICAL	±90°	±90°
IMAGE EFFECT FREEZE	Available	NA
ANALOG OUTPUT STANDARD	NA	NTSC/PAL
MIC	NA	Yes (Internal MIC)
MEMORY INTERNAL MEMORY SD CARD FILE FORMAT	NA NA NA	Yes / 1GB SD compatibility JPEG
SPECIFICATION OF MAIN PARTS SENSOR LENS	IMAGE PICKUP DEVICE OPTICAL FORMAT NUMBER OF EFFECTIVE PIXELS ASPECT RATIO F-NUMBER FIELD OF VIEW	CMOS 1/4.2" 2592(H)*1944(V), 5.03M pixels 4:3 2.8 66.8°
INTERFACE PORT I/F PORT INPUT OUTPUT	NA NA USB-B NA	VGA Built-in MIC VGA USB-B Composite Video
COMPATIBILITY FOR OS PJ PC	Linux2.6 Windows XP SP2 or later Windows Vista	NA Windows XP SP2 or later, Windows Vista Windows 7, Mac X 10.5 and 10.6
OSD	NA	Yes / 13 Languages
LANGUAGE MANUAL USER'S GUIDE	6 Languages (Japanese / English / French / Germany / Italian / Spanish)	29 Languages